



Ornamentals & Turf

Department of Entomology

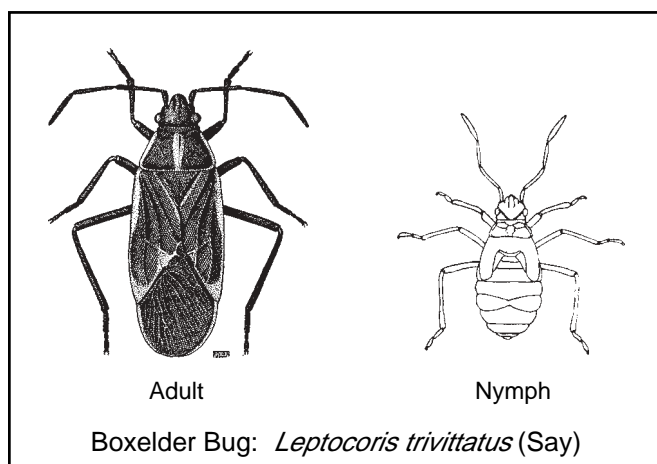
BOXELDER BUGS

Timothy J. Gibb, Extension Entomologist

Boxelder bugs cannot bite or sting but may become nuisance pests when they invade homes. When fall temperatures begin to drop, adults search for protected cracks and crevices to pass the winter. Boxelder bugs near homes may squeeze into cracks in the foundation, windows, doors or under siding and shingles. During the coldest part of the winter the bugs remain inactive, but on warm sunny days in late winter or early spring they begin to return to activity and start leaving their winter shelter in search of egg-laying sites. Boxelder bugs may become trapped inside homes, and although they do not harm household furnishings, they can be annoying when they crawl or fly about the rooms.

DESCRIPTION

Adult boxelder bugs are approximately 1/2 inch in length, dark brown to black in color with conspicuous red markings on their backs. The young (nymphs) are bright red and wingless but are generally similar in shape to the adults.



LIFE CYCLE

Eggs are usually laid on the bark of female boxelder trees but can also be found on ash, maple, plum, cherry, peach, pear and other trees. The nymphs, which begin to hatch around June, have sucking mouthparts and feed by extracting juices from trees. Boxelder bugs feed and grow until midsummer when they develop into the adults which lay eggs for the second brood. Although large numbers of boxelder bugs can sometimes be observed on host plants, their feeding causes no appreciable damage to trees. In late fall, mature boxelder bugs will again migrate from the trees to seek shelter for the winter.

CONTROL MEASURES

Boxelder bugs prefer the pistillate (seed-bearing) boxelders, avoiding the staminate ones. Nurserymen should therefore, propagate boxelders by taking cuttings from staminate trees only.

If only one or two trees of no particular value seem to be the source of boxelder bug problems their removal might prove best for long-term boxelder bug control. But remember that bugs can fly in from elsewhere in a neighborhood. The wholesale cutting of boxelder bug infested trees is therefore not recommended.

Spraying Infested Trees: One of the best controls for boxelder bugs is to spray infested trees during late summer while the second brood of bugs is still immature and concentrated on the trees. Carbaryl (Sevin) and permethrin (Spectracide Bug Stop, Eight) are labeled for this purpose.

Treating Outdoor Infested Premises: As boxelder bugs mature and leave the trees, they sometimes mass around foundation walls, along fence rows, at the bases of trees, evergreen shrubs, etc. Hot water (165°-180°F) applied directly to the clusters readily kills them.

Revised 3/2002